



FY 2023

ANNUAL REPORT

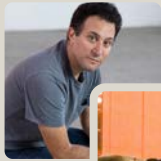


COMMUNITY MUSIC CENTER
MUSIC FOR EVERYONE SINCE 1921

Beth Wilmurt and Sharon Wayne kick off the 2022 Shenson Faculty Concert Series with the intergenerational This World. Other concerts included:

Tunes from Our Backyard: Songs of the WPA California Folk Music Project with David Steinberg

Reimagining the Trapset Drums: From Slavery to Afro-Futurism with Deszon X Claiborne



Mission District Young Musicians Program performs at across the city in partner events: Paseo Artístico, Buena Vista Horace Mann, and Alvarado Elementary's Día de los Muertos Festival

New Voices Bay Area TIGQ Chorus performs at the Transgender Day of Remembrance, marching from City Hall to a memorial event.

CMC hosts Grammy Award-winning drummer Ulysses Owens Jr. for a Concert with Conversation and mentorship with the Teen Jazz Orchestra, in partnership with San Francisco Performances

JUL AUG SEP OCT NOV DEC



Campamento CMC latin music summer camp returns for its second year

Construction begins on the Mission District Branch campus expansion

CMC hosts faculty events at Flower Piano in the SF Botanical Gardens: Latin Jazz Kick-Off with Eduardo Corzo & Friends and Erick Peralta, The Neo-Creolism of the Peruvian Piano.

Debbie Chinn elected as President of the Board of Directors

CMC IT Bookman Older Adult musicians & choir led by Maestro Curtis & Rita Lackey do holiday caroling at a food giveaway

HIGHLIGHTS

CMC Faculty and students rehearse with ABD Productions Skywatchers Ensemble, conducted by Martha Rodríguez-Salazar, for the performance of Gabriel Kahane's *emergency shelter intake form*.



CMC Sessions: Inspiration & Influences kicks off with Scott Foster: Collaboration—Expanding the Musical Landscape. Other faculty presenters include Charlie Gurke, Irene Chagall, Susan Peña, Miguel Govea, Jon Jang, Diane Grubbe, Becca Burrington, and Erick Peralta, featuring CMC's Cultural Traditions and Brass/Winds Departments.



Mission District Young Musicians Program performs at Carnaval SF: on the main stage and joining Dolores Huerta Elementary and Thurgood Marshall Academic High School to form the Carnaval SF Grand Parade contingent "Music for Everyone/Musica para Todos"

CMC IT Bookman Older Adult Choir, directed by Rita Lackey, performs at the Yerba Buena Gardens Festival

Piano faculty and special guests perform in the 19th Annual Juliet McComas Keyboard Marathon: Masterpieces from Folk Traditions in collaboration with Old First Concerts



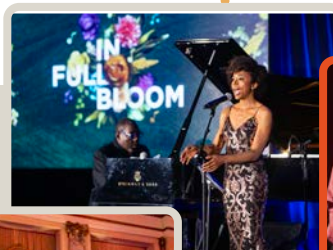
JAN FEB MAR APR MAY JUN



From SFS photo cred: Edwin Outwater conducts the SF Symphony, Conrad Tao, Gabriel Kahane, Alicia Hall Moran, Kristen Toedtman, Holcombe Waller, Community Music Center Choir, and Skywatchers Ensemble in a performance of *emergency shelter intake form* at Davies Symphony Hall on Thursday, February 2, 2023. Photo credit: Kristen Loken.

Nearly 90 CMC vocalists perform *emergency shelter intake form* with community partners and the San Francisco Symphony at Davies Symphony Hall

CMC's String Department presents their 2nd annual faculty concert For the Love of Strings



CMC's Spring Gala: In Full Bloom blossoms with remarkable performances by Tiffany Austin with Marcus Shelby, Sasha Cooke with Jake Heggie, CMC faculty and students, and The Curtis Family C-notes



The Annual All-School Recital highlights Merit Scholar students

Field Day at CMC, our annual community celebration brings the music to our neighbors at Mission Cultural Center for Latino Arts

Faculty from the Black Music Studies Program present A Song of Triumph II: The Diaspora of Black Music at the Juneteenth Celebration at the Museum of the African Diaspora



CELEBRATING EXTRAORDINARY ACHIEVEMENTS

Community Music Center's 2023 Annual Report

DEAR FRIENDS,

We extend our heartfelt gratitude to you as you peruse through the pages of Community Music Center's 2023 Annual Report. Your generosity has been the driving force behind the remarkable accomplishments of our faculty, students, and community during an unprecedented year.

The 2022-2023 academic year marked a period of extraordinary achievement for CMC, with milestones that have positively impacted our faculty, students, and the broader community. One of the most exciting aspects of our growth is the expansion of our reach. In the Bayview district, we warmly welcomed new students in group piano and preschool programs. Additionally, our Older Adult Choir Program grew in three districts and resonated deeply with our community, fostering a sense of unity and artistic expression.

Our collaborations with the San Francisco Symphony, SF Carnaval, Paseo Artístico, and many others have showcased the immense talent within CMC. These standout performances were thematic of critical community issues and allowed our students to shine on prominent stages, garnering well-deserved recognition.

We are pleased to share that our faculty has also experienced significant growth, attracting accomplished and dedicated educators who contribute to the vibrant tapestry of musical education at CMC. Their expertise and passion will play a pivotal role in nurturing the next generation of musicians.

As we reflect on the past year, we are particularly excited about the groundwork laid for a momentous campus expansion and increased accessibility for our community in the coming years. In closing, we want to express our sincere appreciation for your continued support.

Together, we are making a lasting impact on the lives of countless individuals through the power of music. We invite you to join us for the exciting journey ahead.

With our gratitude,



Julie Rulyak Steinberg,
Executive Director



Debbie Chinn,
Board President

CMC student receives composition scholarship from San Francisco Contemporary Music Players

Sebastian Lopez Bossi, 16-year-old violin student in the Young Musicians Program, received the Victor Salvo High School Scholarship Award for his composition “Still My Song’s Cry” for cello, oboe, and vibraphone. CMC violin teacher Katie Wreede encouraged him to apply for the scholarship as a fun learning experience. Sebastian received five mentoring sessions with the

advising composer, Amadeus Regucera. He also had a professional score reading session with SFCMP, where he was given feedback on the performed piece by the advising composer and the musicians. Inspired by the experience, Sebastian will continue composing and is thinking about pursuing a career in scoring movies, video games, or performances.

“

Working with Amadeus was really fun. He was super helpful and I had a great time working with him. The reading was most definitely the best part of this whole experience. It was great to receive feedback on things I didn’t expect, such as notation errors, but also to understand the experience the musicians had with my music.

Musical Culture Nurtured from Student to Professional at CMC

Daphne Gonzalez Cambambia, recent graduate at Ruth Asawa School of the Arts, began her musical journey in 4th grade and quickly found a home in her school's Mariachi program, CMC's long-standing partnership with SFUSD. She was inspired her to create her own ensemble, Mariachi la Misión, which she continues to play with today. Daphne became a CMC student, studying violin and voice, and joining the tuition-free Mission District Young Musicians Program, where she

was able to study the music she grew up with, and embrace Latin American styles that represented her own cultural heritage. Daphne credits studying with Martha Rodríguez-Salazar, Miguel Govea, Nena Aldaz, Tregar Otton, Juan Ceballos, and Charlie Gurke as shaping both her musical and personal trajectories, and now plays professionally with Mariachi Femenil Orgullo Mexicano, the first all-female Mariachi group in the Bay Area.



At CMC I learned not only to play with technique but also with my heart. CMC impacted me in such a positive way and opened so many doors for me, it allowed me to create amazing memories and unforgettable relationships with my teachers and peers. Not only have I grown as a musician and performer but also as a person and I wouldn't have been able to do that without the love and support of the CMC community.

**DAPHNE GONZALEZ CAMBAMBIA, CMC ALUMNA,
MISSION DISTRICT YOUNG MUSICIANS PROGRAM**

Musical Connections inspire a student to give back

Wen-Hao Lue has been taking classes at CMC since 2019 and has been studying jazz piano with Erick Peralta since 2020, and joined the Advanced Jazz Ensemble, led by Charlie Gurke, as a drummer. Inspired by the vibrant jazz community at CMC, Wen-Hao gave back by donating a brand-new jazz drum set in May, and spent countless hours tuning each drum for our jazz drummers.



CMC has helped me meet other jazz musicians and has given me many opportunities to play music outside of class with fellow classmates. Many of the members of the Advanced Jazz Ensemble play a regular weekly jazz gig in the Mission at Ivory & Vine on Sunday afternoons!

WEN-HAO LUE, CMC STUDENT

Expanding Chamber Music Program Provides Platform for Growth & Camaraderie

CMC's campus isn't the only thing growing—so are its programs. The Chamber Music Program, which has grown its youth and adult participants over the past year, continued its expansion by doubling its summer Chamber Music Camp offerings and launched a new summer workshop for adult musicians in July. The brand-new workshop, directed by

string faculty Erik Andersen, was designed to encourage musicians with wide-ranging experience to both develop technical skills and deepen artistic perspectives through collaborative music-making—finding inspiration and togetherness from both faculty and fellow players.

“

It was amazing to hear the music come together and feel when one part was supporting another...being around other musicians really helped me get more understanding of my own instrument. It was a very supportive environment that made it less intimidating to perform—it was nice to know you aren't alone!

LUCIA MORENO, GUITAR STUDENT AND CHAMBER MUSIC WORKSHOP PARTICIPANT

LIFE

Shining a Spotlight on Black Music



The Black Music Studies program broadened its reach in 2022-23, amplifying Black music and culture through new faculty, classes, residencies and special presentations. This program, developed by Department Head Maestro Curtis, PhD, is designed to give students a deep sense of love, respect, and appreciation for the contributions of American Black culture and its global impact and influence.

The program expanded its offerings to include not only a certificate program on history and culture, but private lessons, instrumental, and vocal classes that explore the roots and styles of Black music. It also grew beyond the boundaries of

CMC's branches to include residencies in Bayview at Charles Drew Elementary (pre-school music education) and Bayview Hill Gardens Housing site (a piano lab), in addition to the Bayview Older Adult Choir in partnership with Bayview Senior Services.

We were proud to partner with the Museum of African Diaspora to present A Song of Triumph II: The Diaspora of Black Music, as part of a free museum day and Juneteenth celebration at MoAD. The production featured talented faculty showcasing the influence of the Black music throughout the Americas.



When I teach singing, the first priority is to preserve the integrity of jazz and soul music. I want my singers to understand how Black music has redefined and shaped popular culture. The emotion and feeling comes when we recognize the meaning of songs like 'What's Going On' (Marvin Gaye). I like to create an environment of fun creative expression. But, it's important for my students to know that R&B, jazz, and blues are part of a broader experience. The harmony, rhythm, and lyrics are rooted in African heritage and born out of our struggles as people of color.

RITA LACKEY, FACULTY: R&B CHOIR AND MORE, CMC IT BOOKMAN AND VISITACION VALLEY OLDER ADULT CHOIRS

A STRONG

emergency shelter intake form

The performances of Gabriel Kahane's *emergency shelter intake form* on February 2nd and 3rd, 2023 was a milestone in the more than 100-year relationship between the San Francisco Symphony (SFS) and CMC. The concerts on February 2nd and 3rd, 2023, saw CMC students performing alongside the SFS in a regular season concert for the first time, leaving a profound and memorable impact on the students, faculty, and staff.

Annie Hochenauer from CMC's New Voices Area TIGQ Chorus expressed the **"magical experience of singing in unity with the San Francisco Symphony and CMC colleagues."** Kahane, during rehearsals, conveyed that *emergency shelter intake form* was rooted in an 'ethics of love,' a sentiment that resonated in the collective voices of the performers.

The collaboration garnered praise from SFS staff, with Laura Bergmann, Associate Director Advocacy & Community Engagement, highlighting the collaboration's embodiment of collaboration, curiosity, and community-building through music. The inclusion of a chorus representing the city, including the Tenderloin-based Skywatchers Ensemble, made a profound impact, showcasing the values shared between SFS and CMC.

The partnership between SFS and CMC, established in 1911 and 1921 respectively, has flourished over the years, emphasizing

lifelong enjoyment of music coupled with a commitment to music education. Ron Gallman, SFS Director of Education and Youth Orchestra, serving on CMC's Board of Directors since 1997, emphasized the **"mutual bond and sense of purpose,"** fostering opportunities for collaboration and community service.

CMC faculty member Martha Rodríguez-Salazar played a pivotal role in connecting CMC to SFS, particularly through her involvement in the Symphony's annual Día de los Muertos celebration. She has curated and advised on the event for 16 years, incorporating CMC programs, including the MDYMP and the SFUSD Mariachi Program. In *emergency shelter intake form*, Rodríguez-Salazar brought together a diverse community chorus, including Older Adult Choirs, New Voices Bay Area TIGQ Chorus, Anything Goes Chorus, Coro de Cámara, voice students, faculty, and staff. She directed the community chorus, which included the Skywatchers ensemble, underscoring the willingness of everyone involved to unite their voices and work collaboratively. Rodríguez-Salazar expressed deep humility in witnessing the diverse group of singers perform with the San Francisco Symphony, a testament to the impactful musical partnership between the two institutions.

COMMUNITY

Older Adult Choir Program

CMC's Older Adult Choir Program had an exciting year: participating in a large collaboration with the SF Symphony and expanding to three new sites in San Francisco. Singers from the Older Adult Choir Program formed a large contingent of the over 90 CMC voice students and faculty, directed by CMC faculty member Martha Rodríguez-Salazar, that sang on February 2 and 3 at Davies Symphony Hall as part of the SF Symphony's performance of Gabriel Kahane's *emergency shelter intake form*.

This year three new choirs started in partnership with important community sites: Downtown Senior Center (Tenderloin), Openhouse LGBTQ+ Choir (Castro/Eureka Valley) and the Bayview Choir at Dr. George W. Davis Senior Center. These choirs bring the programs total to 15 choirs serving diverse low-income communities around SF, providing the many personal, social, artistic and quality of life benefits that musical activity can bring to older adults. The choirs continue to act as healthy aging ambassadors performing throughout the city, including at Yerba Buena Gardens Festival, which featured the CMC IT Bookman Choir with CMC's R&B Choir, both directed by Rita Lackey.



A STRONG

Voice Faculty and Students Collaborate in Memorable Performance

CMC Voice Department, led by Ellen Shea, produced CMC's first ever faculty-student voice recital on April 30. The project, supported by a CMC partnership grant, highlighted CMC's collaborative spirit, with a wide cross-section of intergenerational CMC vocalists represented. Members of several CMC choirs,

private voice studios, voice classes, and faculty performed solos, duets, chamber pieces, and a few larger works encompassing Baroque to Broadway, Europe to the Americas, beginner to professional, instrumental accompaniment to a cappella.

COMMUNITY

Recontextualizing the Drums

Deszon X Claiborne's concert and presentation for the annual Shenson Faculty Concert Series explored the drum in a Black History context and commemorated Juneteenth, the

emancipation of enslaved Black people in 1865. The concert paid tribute to the important trap set drummers in the last 100 years, from Baby Dodds to Max Roach to Tyshawn Sorey.



As an artist, I'm inspired by my ancestors who believed that the drum was not only a form of communication but also a tool capable of healing the body, mind and spirit. Because of the power of the drum, the slave owners banned these instruments that created unity and a sense of community for my ancestors in a very sad part of our history. But this didn't prevent drummers from utilizing their drums to communicate, connect, heal, empower, and create. The drum eventually evolved into what is known today as the trap set: a multitude of instruments played by one single drummer, and is used for many music genres.

DESZON X CLAIBORNE, CMC DRUM FACULTY MEMBER



UNIQUE STUDENTS

3289



STUDENTS TAUGHT
IN SFUSD SCHOOLS

920

NUMBER OF
STUDENTS
PARTICIPATING
IN TUITION-FREE
PROGRAMS

594

TUITION-ASSISTANCE GRANTED

\$2,563,632*

SUMMARIZED FINANCIALS

(Audited)
For the
Year Ending
6/30/2023



Statement of Financial Position

ASSETS	\$16,887,266
Cash & equivalents	\$3,423,216
Contribution & tuition receivables	\$469,806
Prepaid expenses & other assets	\$108,621
Investments	\$4,566,745
Property & equipment, net	\$8,318,878
LIABILITIES & NET ASSETS	\$16,887,266
Total Liabilities	\$11,751,632
Accounts payable & accrued expenses	\$120,049
Deferred revenue	\$420,616
NMTC note payable, net (see note)	\$11,210,967
Total net assets	\$5,135,634
Net assets without donor restrictions:	
Available for general operations	\$9,686,143
NMTC transaction funds (see note)	-\$9,243,492
Net assets with donor restrictions	\$4,692,983

Statement of Activities

REVENUE & SUPPORT	\$5,385,717
Tuition, net	\$1,898,063
Contributions	\$1,520,202
Pandemic relief	\$1,232,859
Special events, net	\$290,105
Investment & other income	\$444,488
EXPENSE	\$4,430,322
Program	\$3,698,014
Management & general	\$260,116
Fundraising	\$472,192
Change in net assets, operations	\$1,267,842
Capital campaign income	\$677,689
Capital campaign expense	-\$222,847
Change in net assets, total	\$1,410,237
Beginning net assets	\$3,191,904
TOTAL ASSETS	\$5,135,634

A Note on Tax Credit Compliance:

In FY21, CMC was awarded New Market Tax Credits (NMTC) to help support operations and construction of our new facility at 552 Capp Street. Though the credits are a net benefit to CMC, you will see our balance sheet shows a large loan being donated to an affiliate nonprofit organization, CMC Leverage Lender Inc., which operates exclusively for the benefit of CMC. This is a standard requirement for the NMTC program. After the seven-year NMTC compliance period is successfully completed, the loans will be forgiven and a \$1.5 million dollar net benefit realized on our balance sheet.

BOARD OF DIRECTORS

Debbie Chinn
President

*Executive Director,
TheatreWorks Silicon Valley
Began: 2017*

Barbara Kosnar
Vice President

*Financial Executive (retired),
Union Bank, N.A.
Began: 2011*

Kerry Landry
Vice President

*Independent Consultant, Kerry
Landry Health Care
Consulting, LLC
Began: 2023*

Max Yoshimoto,
Vice President

*Design Lead, Educator,
Musician
Began: 2020*

Michael Marzelli
Treasurer

*Partner, Deloitte
Began: 2018*

Emily Berger
Secretary

*Attorney
Began: 2019*

Julie Rulyak Steinberg
Executive Director

Patricia Taylor Lee
*President Emerita
Chair (retired),
SFSU Music Department
Began: 1989*

Clifford Brown Jr.
*Host/Producer, KCSM Radio
Owner, Brown Audio
Solutions
Began: 2022*

Katherine Bukstein
*Musician
Began: 2017*

Lauren Erickson
*Nonprofit Practice Leader,
G2 Insurance Services
Began: 2022*

Geoffrey Gallegos
*Music Director,
Kensington Symphony,
Began: 2005*

Ronald Gallman
*Director of Education,
San Francisco Symphony
Began: 1997*

Duncan Haberly
*Author/Entrepreneur
Began: 2013*

Brooke Joseph
*Consultant
Began: 2019*

Sharad Mangalick
*Product Manager, Descript
Began: 2022*

José A. Rodríguez
*Chief Development & Strategy
Officer, MNC Inspiring Success
Began: 2021*

Catherine Russell
*Principal Project Manager,
Adobe
Began: 2016*

Nelly Sapinski
*Executive Director, Jamestown
Community Center
Began: 2021*

Paul-David Shrader
*Head of Amazon Key for
Consumer
Began: 2019*

Zach Smith
*Lead Advisor & Partner,
Brighton Jones
Began: 2019*

Jono Kornfeld
Faculty Representative
Began: 2022



ADVISORY FACULTY COUNCIL COUNCIL

Maya Enriquez

*Duluth, Minnesota
Graduate Student*

Ruth Felt

*San Francisco
Founder and President Emeritus,
SF Performances*

David M. Lawrence

*San Francisco
Chairman and CEO (retired),
Kaiser Foundation Health Plan,
Inc. and Kaiser Foundation
Hospitals*

Fritz Maytag

*San Francisco
(former) Brewmaster and Owner
Anchor Steam Brewery*

Lise Deschamps Ostwald

*San Francisco
Musician*

Jono Kornfeld

*Faculty Council Chair & Guitar
Department Chair*

Erik Andersen

Strings Department Chair

Becca Burrington

Brass Winds Department Chair

Leo Baluk

Member-at-large, Secretary

Maria Garcia Plaza

Piano Department Chair

Tregar Otton

*Cultural Traditions
Department Chair*

Ellen Shea

Voice Department Chair

Sharon Wayne

*Member-at-large,
Newsletter Coordinator*

Michaela Overall

*Member-at-large,
Faculty Grants Coordinator*



COMMUNITY MUSIC CENTER'S MERIT SCHOLARSHIPS

Charlotte Ackerley Memorial
Scholarship*

Linda Blacketer Memorial
Scholarship for voice*

Linda Blacketer Memorial
Scholarship for instruments*

Chevron Scholarship*

Bella and P.P. Chiu Memorial
Scholarship Funds at CMC (4)*

Ruth and Martin Elsner
Memorial Scholarships (2)*

Gertrude Field Memorial
Scholarship*

Marian N. Ford Memorial
Scholarship in Strings*

Sid and Iris Frank Memorial
Scholarship*

Tyler Guge Memorial
Scholarship*

Harold Haber Memorial
Scholarship*

Hilda Haber Memorial
Scholarship in piano*

James Hunt Scholarship*

The ISOM Scholarship Fund*

Koret Scholarship*

Sarah S. Koss Memorial
Scholarship



Ruth Lasky Scholarship*

The Mae and Libby
Scholarship Fund for Voice*

The Mae and Libby
Scholarship Fund for Piano*

Juliet McComas Memorial
Scholarship*

Ross McKee Memorial
Scholarships in Piano (5)*

Alice Morini Memorial
Scholarship*

Peter F. Ostwald M.D.
Memorial Scholarship

Reah Sadowsky Memorial
Scholarships

Maurice, Helen, and
Carl Shapiro Memorial
Scholarship*

The Shenson Foundation
Scholarship*

Shorr Memorial Scholarship in
Chamber Music*

Gioia Taber Piano
Scholarship*

Mrs. Paul L. Wattis Memorial
Scholarship*

Joan Wild Memorial
Scholarships (2)*

THANK

We gratefully
acknowledge gifts
received between July 1,
2022 and June 30, 2023



Individuals

- | | | | |
|-----------------------------------|------------------------------------|---|-------------------------------------|
| Myles and Ida Abbott | Jose and Carmen Alvarado | Jenny Au | Paula and Carl Baum |
| James Abrams and Thomas Chiang | Patricia Alvarez-Perez | Barbara Augusta and Peggy Gazette | Marta Bayol |
| Seth Acharya and Gareema Bajgain | Nilda Alverio | Diane Aurelius | James Scott Bays |
| Jacqueline Adams and Jessica Mass | Bill Amatneek and Lenona Winter | Patricia Avery | Marian Beard and Daniel Wehmeier |
| Rocio Agraz-Lara | Elena Anaya | Carol Badran | Sally Beaudette |
| Alice Ahn and Jean-Marie Assier | Rebecca and Allen Ancheta | Marissa Balonon-Rosen | Susan and William Beech |
| Kate Akos and Harry Jacobs | Claudia and Don Anderson | Michelle Banks | Daniel Beery |
| Dora Aldana | Elaine Anderson | Bonnie Bao | Kathleen Beitiks |
| Maria Aldaz | Paula Anderson | Susan B. Barber | Maria Bejarano |
| Nena Aldaz | Kathleen Angus and Lawrence Nelson | Corinne Charlton Barbour | Amy and Gustavo Benedicty |
| Joseph and Michele Alioto | Raquel Arellano | Carmen Madriz-Barnes and Kenneth Barnes | Fred Benz |
| Carol Allen | Rowena Arguelles | Mona Baroudi | Emily Berger and Benjamin Costa |
| Francisco Almazan | George and Marcia Argyris | Danilo and Isabel Barraza | Felicia Berger |
| Chus Alonso | Ira Armstrong | Giuliana Barraza | Bonnie Bergeron and Dennis Montalto |
| Josiane Alpert-Sandler | Gail Arteseros | Alba I. Barreto | Barbara Berk |
| Nancy Alpert | Tryphena Arthur | Stephen and Marietta Bartoletti | Lawrence Bernard |
| Steven Alter | CM Asturias | Priscilla Barton | Penny and Rodney Bertrang |
| | Amy C. and Mark Atkinson | Christopher Basso | Eleanor and John Beshears |
| | Barbara Attard | Keith Bateman | Paul and Sandra Bessieres |

Iris Biblowitz	Scott Bucey and Jennifer Finger	Luiza and Leland Chan	William Corbett-Jones and Louise DiMattio
Larry Binkley and Kathy Huber	Michael Buck	Sandy and Stewart Chan	Consuelo Corral
Richard Binkoff	Robert W. and Maureen A. Buck	Arlyne Charlip and Steven Blumlein	Ramón C. Cortines
Robert Birks and James Johnson	Jan and James Buckley	Andrea Chavez	Andrea Cote
Carolyn Block	Maureen Buick	R. Martin Chavez	Molly Coye
John and Kathy Blum	Katherine and Roy Bukstein	Rick Chavez	Carolyn Crampton
Nancy Blum	Mary Belle Bulwinkle	Rosario and Ramon Chavez	Pat Crawford
Elise Bodtke	Lynn B. Bunim and Alexander L. Fetter	Julia Cheng	Shannon and Dan Cronan
Lucia Bogatay	Adam Burke	Alvin Chew	Colette Crutcher and Mark Roller
Thomas Bombara and Lynn Milan	Shelley Spira Burns	Jean Chew	Pamela Rummage Culp
Jeannette Bonifas	Rebecca Burrington and Kymry Esainko	Lucy Go and Joseph R. Chew	Mary Cunningham
Dennis Bonney	Shannon Burrington	Melanie Manio-Chew and Curtis Ben Chew	Candace Curtin
Christian Bonvin	April Bush	Sherwin and Linda Chew	Sasha and Lauren Cuttler
Jay Bordeleau	Bernard and Lynne Butcher	Craig Chiang	Thomas Dang and Elaine Trang
Christopher J. Borg	Lili Byers and Peter Straus	Debbie Chinn	Janeth Daniels
Aimee Bosch	Rhonda Diaz Caldewey and Jeffrey Caldewey	Mary and Yanek Chiu	Bob David
Jacqueline Bosch and Joshua Loveland	Jim and Gemmie Callahan	Phyllis Chiu	Camryn Davis
Beate Boultinghouse and Dr. Michael Fury	Robert Camargo	Sin-Tung Chiu	Ron and Hilary Davis
James H. Bovee and Felicity Wallis	Maria Cambambia and Sabas Gonzalez	Millie Chou and Brent Cromley	Luz De Jesus
Melissa Boxer	Carrie Campbell	Gert Christen and Michelle Chang	Vinicio de León
Kelleen Boyer	Doug Campbell	Elba Cisneros	Maisie M. Dea-Toy
Therese and Alfred Brandi	Grant Campbell	Deihleen Claffey	Stephanie Decembrino-Arnold
Nathan Brennan and Kathleen McNamara	Robert D. Carey	Sydney Clemens	Carol Lee DeFrancis
Susan E. Brennan	April and Jon Carlson Family	Patty Clement	Angelica Degaetano
Richard Brett and Mary Jo Knueven	Jamie and Alan Carlson	Janet Cluff	Carole Deitrich
Donald T. Briggs, Jr.	Linda Carlson	Jordan Coffey	Norma del Rio and Emily Goldfarb
Amanda Broder and Mark Shatzkin	Pablo Caro	Mark A. and Clare Coffey	Peter Dell
Barry Brown	Maria Guadalupe Carrasco	Helen Cohen and Mark Lipman	Chris DeMarco
Brenda and Donal Brown	Keiana and Fabian Castellanos	Martin and Kathy Cohn	Henry and Nancy DeNero
Clifford Brown Jr. and Pat Thomas	Guadalupe Castillo	Nick Colella	Gertrude E. Denney
Ingrid and Cabot Brown	Malcolm Cecil and Farinaz Agharabi	Susie Coliver and Robert Herman	Terry Desser and Daniel Rubin
	Sara Chalk and William Paul	Nicole Cooper	Dawn Devereaux
		Larry and Michèle Corash	David Devine

Ann D. Dey
Stefano DeZerega
Gabi Díaz-Hernández
Liliana Diaz
Steven Dibner
Molly Dick
Austen and Leah Diliberto
Elena Dillon and
Harriet Damon

Michelle Dimmick
Jeanne Dinkelspiel
Steven E. Dinkelspiel and
Pamela Rose
Minda Diolino
Jacqueline Divenyi
Barbara and David Dobrinen
Pat and Jerry Dodson
Thao and Jerome Dodson
Dan Dodt
Keith Doerge
Robert and Liz Dondero
Mary Louise Donnici
Lee and Leo Dorado
Mary Lou Dorking
Dana Doron
Muying Dow
George and Jean Dowdall
Karen and Richard Downing
Sharon Doyle
Ryan Drake-Lee
Yuanhui Sharon Du
Timothy Dunn and
Aimee Crisostomo
Marilyn Duran
Marga Dusedau and
David Sklar
Beth Dushman and
Adam Bergman

Mohan Dutt
James Dyer
Alyssa Earley
Andrea Echeverria
Kim and Mike Edmonds
Richard and Carol Eick
Tim Eischens
Rama Ekkad
Janet Elliott
Robert A. Ellis
Patricia Elvebak
Ashleigh Emerick
Victoria Emery and
Darren Morgan
Peque Enriquez
Jacqueline and
Christian Erdman
Lauren and Erik Erickson
Gloria Escalante and
Antonino Lopez Lima
Chrysty Esperanza
Tania Esquivel
Almabella Fabian
Eric Farber
William T. Farrar
Susan Farrell
Lynda Fassino
Elizabeth Fattouh
Nancy H. Fee
Andrea and Tom Feeney
Roland and Lois Feller
Ruth A. Felt
Michael Fields and
Pamela Gerard
Paul Fink and Anita Sande
Georgia Finnigan
Doris E. Flaherty
Vicki and David Fleishhacker

Josue Flores
Victoria and Barry Fong
Lee Foreia
Lisa Fortuna and
Michelle Porche
Patricia Fox
Lucena Francisco
Ellen M. Frank
Jane and David Frank
Jon Frank and
Lynne Rappaport
Ruth and Matthew Franklin
Bill and Kathy Fraser
David Freeman
Stephen Freeman
Elsa Freud
Christian Frey
Lauren Friedman
Robin Furrey
James Gabbard and
Yana Zimmerman
Robert Gabriner and
Eileen Goldman
Miguel Galarza
Deborah Gallegos
Daniel Gallisá
Ronald Gallman
Paul and Leslie Gambon
John and Paula Gambs
Ellen Garber and Glenn Hunt
Stephen Garber and
Rena Pasick
Brenda Garcia
Mr. and Mrs. Joseph Garcia
Theresa Garcia and
Kelly Dunn
Margaret Garde
Michael Garde and
Lilly Tran-Garde

Paul Garfinkel
Jeremy Geffen
Alan Geist and Shellie Wiener
Walter Gendell
Susan George
Barbara C. and
Warren R. Georges
Stephen K. Gerard in memory
of Trudy Lionel and
Robert Joseph Gerard
Thorsten Gernoth and
Blanca Rodriguez
Kurt Geselbracht and
Francisco Guevara
Gordon Getty
Leslie Giegerich
John Gilbert
Lucia and Scott Gilbertson
Ronald and Nina Gilson
Vanessa and Matt Ginzton
John and Sheila Girton
Meryl Glass
Eva Go
Cheri and David Goldberg
Jason Goldman
Marcia and John Goldman
Matthew Goldman
Phyllis Goldsmith
Lawrence Goldyn
Gregory and Diana Gomez
Walter Gomez
Lily Gonzales
Carmen Gonzalez
Nancy Gonzalez
Gary Goodman
Debbie Gordon
Joan Gordon
Caren Gould

Miguel Govea and Susan Peña	Judge Ina L. Gyemant (Ret.)	Paul G. Heller and Helen R. Goldsmith	Kenneth and Joanne Hughes
Erik Grady and Ethan Grumbach	Sara Haber and Beth Sousa	Susan Heller and Gerald Lunt	Marilyn and Scott Hughes
Megan Graf	Duncan Haberly and Jenn Sharp	Isabel Heredia	Donald and Shirley Huie
Christine Greene	Nina Hagiwara	Jeaux Hernandez	Naomi Hulme
David Max Greenfield	Tim Hall	Martha Hertelendy and George Norton	Fiona Humphrey
Joe Greenstein and Rachel Sheinbein	Nina Han	Clare Hinchion	Evelyn Hunt
Ronald Gregoire	Fabiha Hannan	Beverly Hines	Claire Hunter
Jason Griesbach and Heidi Kirsch	JP Harbour	Carole Hines and Mavis De Wees	Jocelyn Hunter
Janet Griffin	Phyllis Harding	Linda Hitchcock and John Lindop	Brenda Hutchinson
Kaitlin Griffin	Claire I. Harmon	Mui Ho and Bill Hocker	Peter Hwang and Theresa Chang
Phoebe Grigg	Barbara Harms	Jack Hoffman	Cristina Ibarra
Audrey Groomes	Helen Harper	Cynthia and Robert Holbrook	Marilyn Hersh and Richard Illig
Mary Ann Grossman	Michael Harrington and Davi Weisberger	Robert Holley	Vivian Imperiale
Anthony Grumbach and Kate Poole	Sasha Harris-Cronin	James C. Hormel, Jr. and Jana Leon	Melis Inan
Guenter Gruschka	Dan Harris and Lois Hirsch	Michael P. N. A. Hormel	Arlene Inch
Lin Xi and Zhen Gu	Thomas Harvey	Lori and Mark Horne	Tucker and Charmly Ingham
Pedro and Marcia Guaman	William Haskell	Felicia and Yoshikazu Hoshino	Carl Inglin
Mario Guarneri and Lauraine Rose	Neal Hatten	Mark How	Joan Intrator
Angelica Guerrero and William Naylor III	Daniel Haworth	Geoff Hoyle and Mary Winegarden	Hiroimi Itoh
Gloria Guidos	Karen Haydock	Rocio Martin Hoyos	Jacqueline Ivens
Michelle Guilbeault	Carol Heard	Lan Hua	Sait Izmit
Elena Gutteridge	Sheryl Heckmann	Mary Hudson	Lynn and Robert Jacklevich
Manuel Guzman	Tamra Hege	Grace Huenemann and George Sher	Grace Jacob
	Jake Heggie and Curt Branom		Zaki Jacob
	Margaret Heineman		Susan and Doug Jacobs
			Diane Jacobson



THANK



- | | | | |
|--|---|---|-----------------------------------|
| Jacqueline Jacoby | Steve Kahl and Lolly Lewis | Minja Kim | Peter and Beverly Koenig |
| Orena James | Catharine and John Kalin | Robert Kim | Barbara Kosnar and Thomas Goldman |
| Mike and Elizabeth Jamieson | Marjorie and Robert Kaplan | Bobbi and David Kimball | David Kramer |
| Ana Jaramillo | Jed Katzel and Elizabeth Ward | Barbara and David Kimport | Michael and Marna Kramer |
| Roger Jeanson | Allison Kaup | Mary C Magee and Ed Kinchley | Adrienne and Bob Krause |
| Hank Jen | Hazel and Michael Kawaja | Jennifer King and Mark Weinstock | Alexandra Krause |
| Marilyn Jensen | Diane Keaton | Niloufer and David King | Brian Kreis |
| Cecilia Jeung | Peter and Jennifer Keith | Ethel Kirk | Sherry Kreis |
| Lety Jimenez | Robert Kennedy and Linda Cicero | Ludmila Kisseleva-Eggleton and Peter Eggleton | Jane S. Kumin |
| Tino Jimenez | Susannah Kennedy and Klaus Poppensieker | Andrew Kitchen and Monja Merkel | Terri Kwiatek |
| Alan and Evelyn Johnson | Emilia Ledon Kennion | Kikue Kiyasu | Therese and Ronald Labuguen |
| Doug Johnson | Pauline Keogh | Courtney and Zach Klein | Mark Lacey |
| Helen Johnson | Ana Cecilia Khalil and Sergio Rosales | Carole and Henry Klyce | Elmira Lagundi |
| Stephen Johnson | Teyzardanti Khin | Carol Kocivar and Terry Norbury | Gyöngy Laky and Thomas Layton |
| Kerri Jones | Kathy Kiehn | Dave and Sharon Koehler | Binh Lam |
| Sean Jones and Alexandria Brinae Bradley | Caroline Kim | | Gwendolyn Lancaster |
| Marc and Brooke Joseph | | | Kerry Landry and |
| Helga Justman | | | |

Dave Friedrich	Dominic Lim	Mark Malaspina	Carolyn McNamara
Kari Lane	Joseph Lim	Shikha Malhotra	Eugenia McNaughton
Darlene Lanka-Klimenko	Terry Lim	Susan and Jay Mall	Kathleen McNulty
Lauro J. Lara	Bonnie Lindahl	Susan Malott	James Meehan
Lisa Larribeau	Bonnie Lindauer	Paul and Mare Manangan	Barbara J. Meislin
Spencer and Dorothy Larsen	Ana Linder	Mrs. Gerald Manerud	Gail Mejeur
Marshall and Mary Lasky	Bernice Lindstrom	The Mangalick and Maitra Family	Oscar Melara and Kate Connell
Sarah Lauterborn	Paul Lingane and Maria Navarro	Justin Mar	Gladys Melendez
M. Lawrence	Sharon L. Litsky and John F. Sampson	Fong Marcolongo	Patricia Melgarejo
Consuelo Ledon	Edgar Liu and Thandar Nyunt	Abby Margolis	Helen and Thomas Merigan
Barbara and Michael Lee	Jane Logan	Victor Marquez	Chuck and Libby Meyer
Dottie and Wayland Lee	Janet Lohr	Carlos and Carol M. Martel	Mary-Beth Meyer
Elizabeth C. Lee	Tom and Jackie Longust	Titia Martin-Nagel and Anthony P. Martin	Eliska and Randy Meyers
Kristina Lee	Jose Lopez	Lourdes Martinez-Ortegon and Enrique Ortegon	Chasta Michaelis
Molly and David C. Lee	Raquel Lopez	Alaides Martinez	Harold E. Scott Miller and Barbara Conahan
Nancy Lee	Sylvia Lopez	Esperanza Martinez	Sandy Miller
Patricia Taylor Lee	Tomas Lopez	Fernanda Martinez	Warren E. Miller and Britt-Marie Ljung
Rich and Christina Lee	Mardith J. Louisell	Lisandro Martinez	Brian D. Ming and Deann A. Robinson
Ms. Rozelle Lee	Patricia Ann Low and Gary Kent Low	Nivea Martinez	Judy Minton
Ruth H. and Roy Lee	Krista Lucchesi	Stacy and Peggy Mathies-Wallace	Jackie Mirada
Winston and Martha Lee	Linda Lucero	Vance Maverick	Ana Miranda
Kai Moore LeFranc	Ann Ludwig	Rob Mayberry	Anne Mitchell and Sage Staggs
Sam Leftwich	Bill and Wendy Lueth	Fritz and Beverly Maytag	Lynn Mitchell
Mary Pat Leoni	Lawrence Lum	Tim and Suzanne McCallin	Jackson Mohr-Zinn
Jenny Leung	Jerry Lumbang	Paul McCurdy	Mark Sherman and Susan Mohun
Ms. Mei Yan Leung	Thomas and Carol Lustenader	Thomas E. McDonald and Hye Yeong Min	Maria E. Molina-Perez and Ben Molina
Fred Levin	Laura Lynn	Mary Ellen McDonnell	Donald and Carole Molloy
Toby and Jerry Levine	Paul Lyons and Andrea Kuster	Grace McField	James and Lee Ann Monfredini
Sally Levinson	Carleton MacDonald	Susan McGarry	Felicia Montineri
Avery Lewis	Walter Mach	Peter McGrath	Ann Mony
Robert Lee Lewis, Jr.	Laurie MacKenzie	Janice McIntosh	Debra Moore and Sally George
Rose Lewis	Ruth MacNaughton and Harold Spencer	April McMahan	Emelina C. Morales
Sally Lewis, in memory of Louis Lewis	Aleyda Mairena	Eamonn McManus	
J. Stoner Lichty, Jr. and Darryl Raszl	Preeta Maitra		
Lightfoot - Stone Family			

Estela Moreno	Ms. Patricia O'Brien	David Pendrake	Linda Ramey
Monica Moreno	Mairin O'Mahony	Zenobia and Richard Pennes	Roger Ramey and Marta Tobey
Peter and Emily Morfin	Michael and Sylvia P. O'Neill	Maria Pereda	Kara Ramos
Zachary K. Morfin	Lily Ocampo	Bonnie M. and Carlos A. Pérez	Lewis Randall
Barbara Morgan Zaney	Katherine Ockels	Lorena Perez	Manuel Raneda
Beverly Morgan	Garrick Ohlsson and Bob Guter	Rebecca A. Perez	Sabrina and Lincoln Raphael
Nancy Morgan	José Olivares	Jamie Perkins	Joshua and Marisa Rapport
Jonathan Moscone and Darryl Carbonaro	Joshua Oliver	Lucy Perrez	Thomas Rattigan
Robert P. Moser	Cristina and Juan M. Olloqui	Carolyn Peter and Nigel Raab	Karen and Richard Recht
Alma and Toye Moses	Patricia Olsen	Rebecca Peters	Joan Rees
Trisha Mount and Andrew Etherington	Tammy Oreglia	Marcia Peterzell	Christian and Elenka Refsell
Ted and Dale Muegenburg	Carlos Ortega	Nancy Petranto	Anna Reig
Leslie K. Mulhair and Karen Dudley-Mulhair	Lise Deschamps Ostwald	Frances Phillips and Stan Hutton	Arthur and Toni Rembe Rock
Pat Mullan	Ladene Otsuki	Patricia and Vernon Phillips	Maria Elena Reyes
Georgina Muñoz	Marie Luise Otto	Steve Pickrell	Raul G. Reyes
Martha and Rafael Muñoz	Tregar Otton and Maru Pérez-Viana	Heidi Pidcoke	Regina Reyes
Rosario Murga and Daniel Kusnir	James Ou and Christine Yu	Genny Pinzon	Virginia Reynolds
Ma Khine Min Naing	Joe Ovadia	Joellen Piskitel	Allan Ridley and Helen McKenna Ridley
Katherine Nakagawa	Jefferson Packer	Bob and Angela Platzter	Maria M Del Rio
Shirlene and Randy Nakano	Jane Padua	Rosalie Platzter	Morey Ritt
Harsh and Indira Nangia	Anne R. Paine	Mark and Janet Plumley	Jose and Haydee Rivera
Supraja Narasimhan	Lucas Paine	Liz Podolinsky	Pedro C. Rivera
Carl and Amy Nathan	Nancy Painter	Kuei-Ling Pomerleau	Karolyn and Darryl Roberson
Lew and Deb Nerenberg	Vicky Palacios	Ruth S. Poole	Katherine Roberts
Mara Nerenberg	Joseph Palladino	Stephen J. Popper and Elizabeth Joyce	Sherri Roberts
David J. Neuman and Adele M. Dorison	Richard Pallari	Justa SoyRon Portales	Sandra Robins
Sally Newman	Luci Palucio	Dr. Marya A. Postner and Dr. Tito A. Serafini	Jerry and Diana Robinson
Angela Nieves	Nabina Park	Caitlin Powell	Martha Rodríguez-Salazar and Jennifer Peringer
Emanuela Nikiforova	Todd Park and Amy Geng	Jeanette M. Prato	José A. Rodríguez and René Nieves-Alicea
Katherine Nomura	Alan and Kim Parnass	Stephen Prestwood	Phillip E. Rodriguez
Jack Calhoun and Trent Norris	Corey Passero	Emmalena Quesada and Anthony Marshall	Leslie Roffman
Jennifer Norris	Meta Pasternak	Jessica Quiroga	Diana and James Rogers
Judith and William Nuerge	Tony Patel-Dunn	Joseph Radovsky	Jane Rogers and Michael Fischer
	Rodney and Anne Pearlman	Helen Hilton Raiser	
	Patricia Pendergast		

Alice E. Rogoff	Francesca Sampognaro	Marc Shapiro	George and Camilla Smith
Luz A. Roldan	Manolo Sandoval	Stephen Shapiro and Ellen Rosenthal	Melanie Smith and William Pine
Terry L. Roller	Maria Santo	Tom Shea and Ellen Glikberg Shea	Sarah Smith
Darla Romano	Fe Santos	Barbara and Peter Sapienza	Zach and Kendall Smith
Nakari M. Ron	Nelly Sapinski	Amanda Sargisson and Kevin Duffin	Ross and Susan Snailer
Mark and Sarah Roos	Tim Savinar and Patricia Unterman	Sylvia Sherman and Roberto Medina	Andrea Snow and Larry Adelman
Avidan Rose	Betty and Jack Schafer	Cindy Shih and Carlos Lopez	Kaitlin Solimine
Norman and Nan Rosenblatt	Hilda Scheib and David Handsher	Damion and Ericka Shoemaker	Angela Solis
Diane Rosenfield	Karla Schiemann	Jeff and Gretchen Shopoff	John Souza and Debra Lepsch
Paul H. Roskoph	Adrienne and Norm Schlossberg	Lawrence G. Shore and Sandra Yuen	Thomas E. and Marie C. Sparks
Alessandro Rossi	Steve and Faith Schneider	Richard and Diana Shore	Seldy Cramer Speers and Michael Turelli
William Rothmann	Joseph Schubert	J. Edward and Ann J. Short	Zachariah Spellman
Lisa Rubens and Daniel Beagle	Brigitte Schulz	Joe Short	Carolyn and Stephen Spitz
Geoff Rubio	John W. Schulz D.D.S.	Paul-David Shrader	Fred Spitz
Allen and Cindy Ruby	Nina Schwartz	Robert Shultz	Polly Springhorn and Tim Walters
Carolina Ruiz	Tom and Kathy Scott	Stuart Silberman	Carolyn and James Squeri
Felipa Rulloda	Rusty Sealy	Wendy Simon	Hari Srinivasan
Catherine and Jacques Russell	Pamela Sebastian	Anne Simons and Michael Castleman	Sandy Stadtfeld
Jeannie Sack	Tristan Seifer and Brian Aubry	Carol Simpson	Kathryn Stambaugh and Tom Mazzotta
Dr. and Mrs. Henry Safrit	Jose Serrano	Ralph and Mira Sinick	Mary Starkey
Asuman Sahan	George Sery and Rose Campbell	Karen Slater	Eric Stassevitch
Sonia Salas		Sarah Slaughter	Carol Steinberg
Dayna Salter		Anne Smith	
Lita Sam-Vargas and Alan Gevins			



David Steinberg and
Julie Rulyak Steinberg
Yee-Wan and John Stevens
Valery and Richard Steward
Susan Stewart
Betsy Strausberg
David Stricker
Jim Stricker and
Mary Jean Stempien

Kristen Sard
Lucene Thomason
Susan Thompson
Donald Tine
The Allen and
Denise Tom Foundation
Patricia Tom
Jack Tomlinson and
Amanda Roos

Joan Varrone
Paul Vaughn
Robert C. Vazquez
Alfonso Vega and
Manuela Pennes
Maria Velazquez
Maria Esther Ventura
Tony and Jane Verma
Leora and Michael Vestel

Barbara Wein and
Michael Whitehurst
Peter and Patti Weinberg
Philip R. Weinstein, M.D. and
Jill Weinstein
Jennifer King and
Mark Weinstock
William Welch
Ann Wellington
Denise Wells

Joe Stricker
Marie Stricker
Michael Stricker
Steven Stricker
Pierre and Alice Megan Stroud
Arlene and Steven Suda
Daniel and Gilda Sullivan
Maura Sullivan
Maureen Sullivan
Ben-Han Sung
Linda Dallin and Paul Sussman
Peter D. Sutherland and
Ana M. Validzic
Patrice Sutton
David and Diane Swartz
Louise Swig
Mary and Steven Swig
Roselyne Swig
Gregory Sykes
Betty Taisch
Shirley Tan
Aileen Tang
Suzanne and Bill Taves
Brian Taylor
Frances H. Taylor
Barbara Tell and Victor Roldan
Nancy Tennebaum
Wally Tettamanti
Charles Thayer and

Angelique Tompkins
Maria and
Pedro G. De La Torre
Mina Torres
Dr. M. Christine Torrington
Herbert Toy and Rita Yee
Sharmon Hilfinger and
Luis Trabb-Pardo
Karen and Leon Traister
Kaitlin Trataris
Vicky Trieu
Melissa Trimble Luciano
Aimee Truong
William R. Trutna and
Susan Payne
Mary Tully
Margaret O. Tunnell
Charles and Judith Turner
Noel and Denise Turner
Martin A. Ortega and
Sarah E. Twiest
Kuya Ty
James B. Tyler
Misty Tyree
Dolores Ubeda
Josephi Umale
Dee Valdez
Debra and Michael Varner
Elizabeth Varnhagen and
Steven Greenberg

Sandra ViaFuente
Joanne and Alan Vidinsky
Karl von Brockdorff
Saturnino Vorgas
Dyana Vukovich
Daniel Wabyick
Margaret P. Walden
Hilary Wall
John Wallace and
Ellen Rashbaum
Donald Roger and
Susan Waller
Sandy and Rita Walsh-Wilson
Sharon Walsh
Charlie M. Wambeke and
Melody Chan Doss-
Wambeke
Eileen Wampole
Cary Wan
Jessica Wan and John DeNero
Ellen Wang
Grace Wang
Lisa Wang
G. Kenneth Ward
Holly Ward
Nancy Webster Ware and
Lauren Craig Hickman
Kim Warsaw
Sharon Wayne and
Frank Welte

Caroline Kahn Werboff and
Lawrence Werboff
Andrew Westley
Ann Wettrich
Cynthia D. Whitehead
Boots Whitmer and
Bob Steiner
H. Mark Wild and
Gabrielle Zadra
Nelson and Diana Wild
Peter Wiley
Addy Williams
Derrick Williams
Moira Wilmes
Diane B. Wilsey
Angela Wilson
Mark Winogron
David Winslow
Jane Winslow and
Harvey Hacker
James Wintersteen
Lance and Lauren Wiscomb
Richard and Sue Wollack
Douglas Wong
Felix Wong
Godfrey Wong and Ivy Ng
Susan Wood and
Michael Wineke
Richard Woodul, II
Donald Worth

Malissa Yabut

Odessa Yabut and
William Krause

Zeth and Annaka Yabut

Diana Yee

Ivy Yee-Sakamoto

Ellen L. Yeung

Paul Yonemura

Max and Jini Yoshimoto

Robin Young

Tachina Rudman-Young and
Peter Young

Clare Yuan

Al Yuen

Breene Yuen

Julie Ann Yuen and
Monica Nolan

Bill and Mary Ann Zamula

David Ramon Zaniba

Alicia Zarate

Linda and Gary Zellerbach

Thomas and Amy Zellerbach

Aihong Zeng

Richard and Victoria Zitrin

Anonymous (82)



Founders Circle

Community Music Center gratefully acknowledges Founders Circle members for their generosity and foresight in including CMC in their estate plans. If you have provided for CMC in your estate plans but are not listed, or if you would like information about joining the Founders Circle, please contact Elenka Refsell at erefsell@sfcmc.org or (415) 647-6015 x 178.

Randy Adams	John Friedlander and Norma Teagarden	Marie M. Longhi	Norman and Nan Rosenblatt
Jean Amos	Laure Gould and Severo Ornstein	Rebecca and Scott Loots	Helen and Leonard Rosenman
David and Judith Anderson		Adelma LoPrest	Gerald B. Rosenstein
Elizabeth Anker	Doris W. Grau	Karl and Ann Ludwig	Joseph A. Rosenthal
Jean F. Arnstein	Ronald Gregoire and Bryan Freedman	Sherry Lund and Carl Cheney	William L. Rusconi, Jr.
Michael P. Bailey	Harold Haber	Melanie Marks	Joseph Schubert
Yvonne and Edgar Baker	Preston Hartman	Brian Marr	Stephen Shapiro and Ellen Rosenthal
Mario Balestrieri	John Hege	Ingrid Martinez	John Grew Sheridan
James Scott Bays	Isabel Heredia	Peggy McIntyre	Frances Shorr
Beatrice Beauregard	Frances L. Hildebrand	Barbara J. Meislin	Robert Shultz
Carole B. Berg	Jack A. Hirsch	Lucy L. and John Merriam	Anita Starr
Joy Berry	Marilyn and Scott Hughes	Richard Montero	David Steinberg and Julie Rulyak Steinberg
Katherine L. Brody	Virginia Irvin	Patricia L. Morris	Allen and Elaine Steinmetz
Zelda Bronstein	Elizabeth Jimenez	Lee J. Mosley	Barbara Stevens
Bernard and Lynne Butcher	Marguerite Judson	Trisha Mount and Andrew Etherington	Gioia C. Taber
Irene Chagall	Catharine and John Kalin	Peggy Nathan	James B. Tyler
Sin-Tung Chiu	Gertrude Kanner	Robin Sutherland and Carlos Ortega	Misty Tyree
John A. Clements and Margot P. Clements	Robin Kay	Olive Mae Palany	Dolores Ubeda
Ramón C. Cortines	Barbara Kosnar and Thomas Goldman	Rebecca A. Perez	Michael Vella
Jay A. Darwin	Kathleen Krakover	Beatrice Pixa	Lois Wagenhals Sanders
Leonie J. Darwin	Jane S. Kumin	Edie and Ira Plotinsky	Manya Warner
Jean C. Deanesly	Terri Kwiatek	Flora Raggio	Jean Lois White
Frances L. and Martin J. Dinkelspiel	Alan Lanka and Darlene Lanka-Klimenko	Marcelle and Milton Raisbeck	Betty Jean Wicklund and Raymond McNeil
Jean and Fred Dominey	Fred Latson	D'Arcy Reynolds	Beth and James Wintersteen
Lyne Marie-Louise Duchamp	Richard and Patricia Taylor Lee	Constance Roos	Ellen L. Yeung
Martin Elsner	Toby and Jerry Levine	Jane Roos and Jean-Louis Le Roux	James L. Young
Michael Fields and Pamela Gerard	James R. Lilienthal	Leslie L. Roos	Mike Zimmerman
Georgia Finnigan	Martin J. and Jane Livingston	Fred Rosenberg	Anonymous (6)



**Businesses/
Organizations**

Ackerley Advertising
 Adobe, Inc.
 AmazonSmile Foundation
 American Endowment Foundation
 Amoeba Records
 Apple, Inc.
 Autodesk, Inc.
 Bank of America, N.A.
 Benevity Community Impact Fund
 Braze, Inc.
 Bright Funds
 Brighton Jones, LLC
 Cara Glass & Sash, Inc.
 The Clorox Company
 Community Thrift Store
 Dell Inc.

Donate for Charity
 Fidelity Investments Charitable Gift Fund
 First Republic Bank
 Gelfand Partners Architects
 Google, Inc.
 Hydroid Inc.
 Jewish Communal Fund
 Jewish Community Federation
 Kaiser Permanente
 Classical KDFC
 Lasky Charitable Lead Trust
 Levi Strauss Foundation
 Helen and Thomas Merigan Charitable Trust
 Merrill Lynch - Global Wealth Management
 Meta Platforms, Inc.
 Mission Neighborhood Centers
 Morgan Stanley

Morgan Stanley Global Impact Funding Trust, Inc.
 Music is the Way
 Network for Good
 Novogradac
 Noyola Piccini Group
 Oak Hill Capital Corporation
 Okta, Inc.
 Oliver & Company, Inc.
 PayPal Giving Fund
 Pew Charitable Trusts
 Preferred Building Services
 Roblox
 Roland Feller Violin Makers
 Salesforce.com, inc.
 San Francisco Conservatory of Music
 The San Francisco Foundation
 San Francisco Gay Men's Chorus

San Francisco Opera
 San Francisco Performances
 Sand Hill Global Advisors, LLC
 Schwab Charitable Fund
 ServiceNow, Inc.
 SFJAZZ
 Silicon Valley Community Foundation
 Sing for America Foundation
 SSM Law, PC
 The Swig Foundation
 T. Rowe Price Charitable
 United Way California Capital Region
 Vanguard Charitable
 Ventura Partners
 Wells Fargo
 YourCause, LLC
 Anonymous (1)

Foundation and Government

Yvonne & Edgar Baker Fund

Joyce & William Brantman Foundation

Mervyn L. Brenner Foundation

California Arts Council

Keith Campbell Foundation for the Environment

Frank A. Campini Foundation

Charles N. Felton and Charlotte Ashley Felton Endowment

Gerbode Foundation

The Bill Graham Supporting Foundation of the Jewish Community Federation and Endowment Fund

Clarence E. Heller Charitable Foundation

William & Flora Hewlett Foundation

The Hurlbut-Johnson Fund

The Kimball Foundation

Michael J. Kirsch Foundation

Alexander M. & June L. Maisin Foundation

Ross McKee Foundation

Joseph and Mercedes McMicking Foundation

The MOCA Foundation

National Endowment for the Arts

Henry Mayo Newhall Foundation

The Nicholson Family Foundation

The Bernard Osher Foundation

Sahm Family Foundation

George H. Sandy Foundation

Sequoia Trust Fund

Taube Philanthropies

The Woodlawn Foundation

Yerba Buena Fund

San Francisco Department of Disability and Aging Services

Anonymous (3)



In-Kind

AFICI by Alexander's
Steakhouse

Alto Rideshare

American Conservatory
Theater

Amoeba Records

Aquarium of the Bay

AsiaSF

Balletto Vineyards

Bay Area Discovery Museum

Berkeley Repertory Theatre

Blake Charles Salon

bloomers

BlueTree Marketing Corp.

Lucia Bogatay

Katherine and Roy Bukstein

John Candela

Catelli's Restaurant

Chanticleer

Charles M. Schulz Museum

Debbie Chinn

Concannon Vineyard

Credo Restaurant

Daily Driver

Deem Sum International, Inc.

Steven Dibner

Dry Creek Vineyard

Emily Joubert Home and
Garden

Michael and Nina Endelman

Lauren and Erik Erickson

Forge SF

Ramona Fung

The Gardener

George Stadelmann

Golden State Warriors

GoPro Employees for a Cause

Rochelle Gottlieb

Grace Cathedral

Guittard Chocolate Company

Matthew Hamilton

Hog Island Oyster Company

Inspirato For Good

Jewish Film Institute

Marc and Brooke Joseph

JR Nuerge Designs

JSX

Kathleen Kelley Artisan

Mark Kaufman

Kendra Scott Design, Inc.

Ludmila Kisseleva-Eggleton
and Peter Eggleton

Kleid Design Group

Deborah Kwan

Laird Family Estate

Kerry Landry and
Dave Friedrich

Kenna Lee

Patricia Taylor Lee

Let's Roam, LLC

Victor Lezama

Sharon L. Litsky and
John F. Sampson

Wen-Hao Lue

Mariposa Baking Company

Andrew McClelland

Galileo Medrano

Mr. Tipple's Jazz Club

Maureen O'Neill

Angela O'Rourke

Oakland Athletics Community
Fund

Oakland Zoo

ODC Dance Commons

Chris Olson

Omni Foundation for the
Performing Arts

Pacific Edge Voices

Palace Hotel San Francisco

Savannah Prehn

Christian and Elenka Refsell

Roaring Camp Railroads

William Rothmann

Roxie Theater

Sandwich Glass Museum

San Francisco Giants

San Francisco Museum of
Modern Art

San Francisco Opera

San Francisco Symphony

San Francisco Zoological
Society

Amanda Sargisson and
Kevin Duffin

SF Salon Music

Stephen Shapiro and
Ellen Rosenthal

Sky Cafe

Zach and Kendall Smith

Sojourn Ventures

Polly Springhorn and
Tim Walters

Carolyn and James Squeri

William R. Trutna and
Susan Payne

Urban Legend Cellars

Urban Putt

Henry Velasquez

Walt Disney Family Museum

Winchester Mystery House

Wynn Las Vegas and Encore

Anonymous (2)





Mission District Branch
544 Capp Street
San Francisco,
CA 94110
415.647.6015

Richmond District Branch
741 30th Avenue
San Francisco,
CA 94121
415.221.4515



COMMUNITY MUSIC CENTER
MUSIC FOR EVERYONE SINCE 1921